

PORTABLE AND SEPARABLE MARKING MACHINE BML- FS



World brand



3 Years warranty



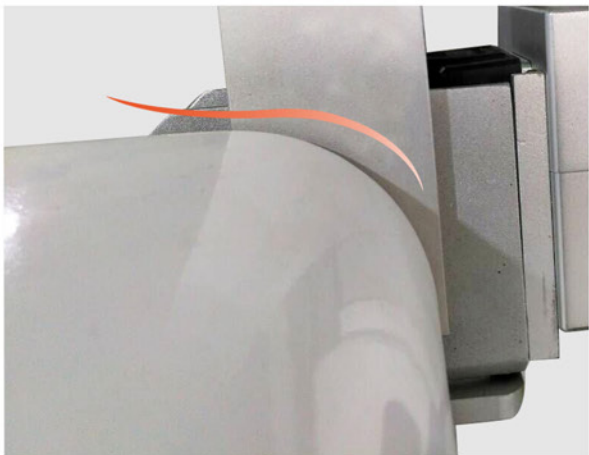
Honors



Multi-language
service



NO.1 STREAMLINED DESIGN



NO.2 HAND HELD TYPE



NO.3 START-STOP BUTTON



NO.4 SEPARABLE ALUMINUM TABLE



NO.5 MARKING HOLDER



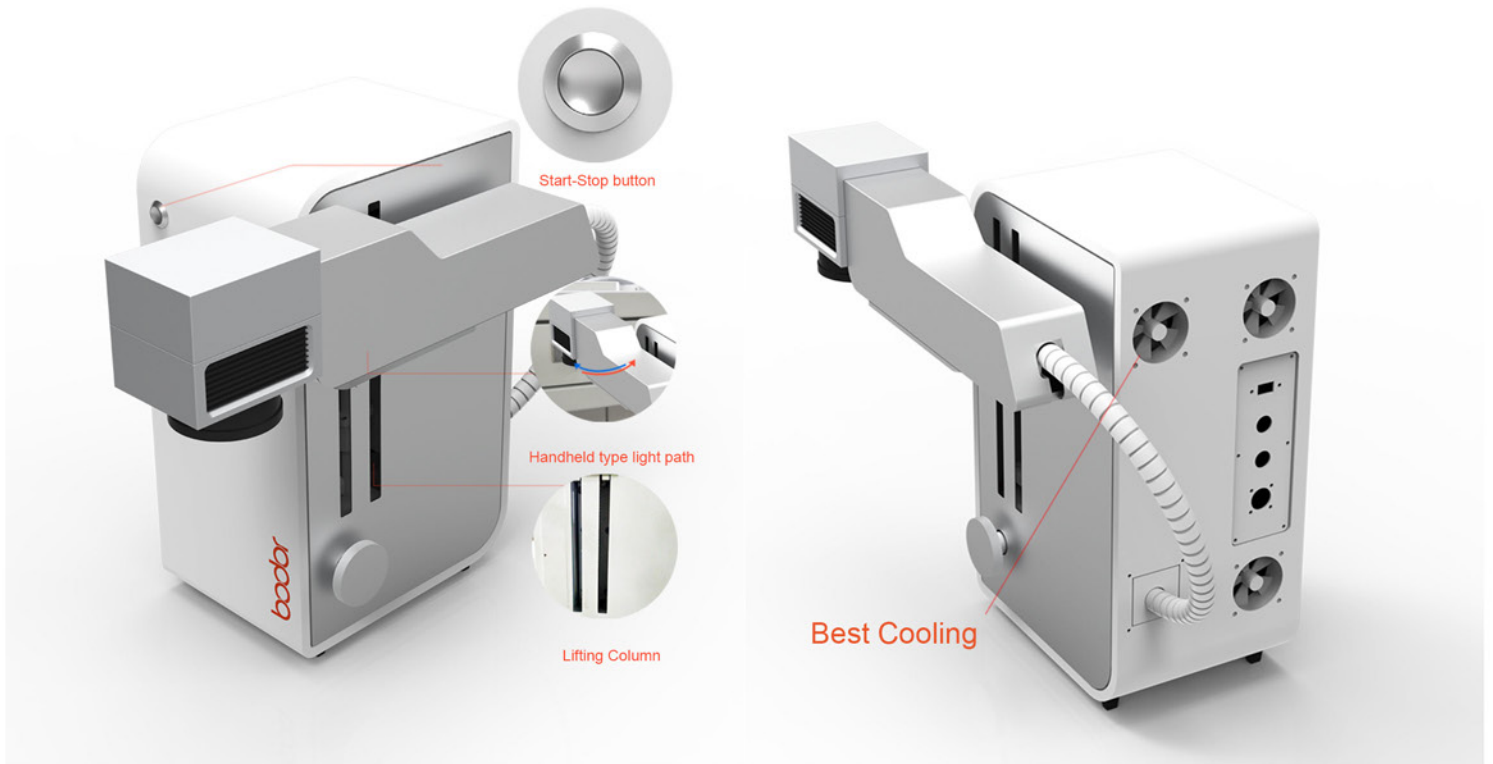
NO.6 LIFTING COLUMN



NO.7 SMALL AND SIMPLE



SIDE PHOTO SHOW



Option



Fiber laser
protective goggles



Rotary device

MAIN FEATURES

7 BEST ADVANTAGES

1

Smaller and lighter machine

Unique and ingenious design

3

Aluminum marking HOLDER

Support light path with safety

5

Separable working table

Putting object easily

7

3 years warranty

2

Handheld laser marking

Large flat marking and could marking everywhere.

4

Lifting column

Stand column vertical movement

6

Three-in-one power

Making 5V, 15V, 24V power three-in-one, saving machine space

PORTABLE AND SEPARABLE MARKING MACHINE BML - FS SERIES

MACHINE PARAMETER

Model	BML20FS	BML30FS
Working Area	100*100mm(Option: 200*200mm)	
Laser Power	20W/30w	
Frenquency	20KHz~60KHz/20KHz~80KHz	
Laser Wavelength	1064nm	
Minimum Line Width	0.02mm	
Minimum Characte	0.15mm*0.15mm	
Engraving Line Speed	≤ 7000mm/s	
Repeatability Accuracy	±0.01mm	
Graphic Format Supprted	bmp . jpg . gif . tga . png . tif . ai . dxf . dst . plt . etc	
Unit Power	<0.5kw	
Laser Module Life	>100000 hours	

Application

Applicable Industries:

Mobile phone keypad, plastic translucent keys, electronic components, integrated circuits (IC), electrical appliances, communication products, sanitary ware, tools, accessories, knives, eyeglasses and clocks, jewelry, auto parts, luggage buckle, cooking utensils, stainless steel products and other industries.

Applicable Materials:

Metals (including rare metals), engineering plastics, electroplating materials, coating materials,coating materials, plastics, rubber, epoxy resin, ceramic, plastic, ABS, PVC, PES, steel, titanium, copper and other materials.

